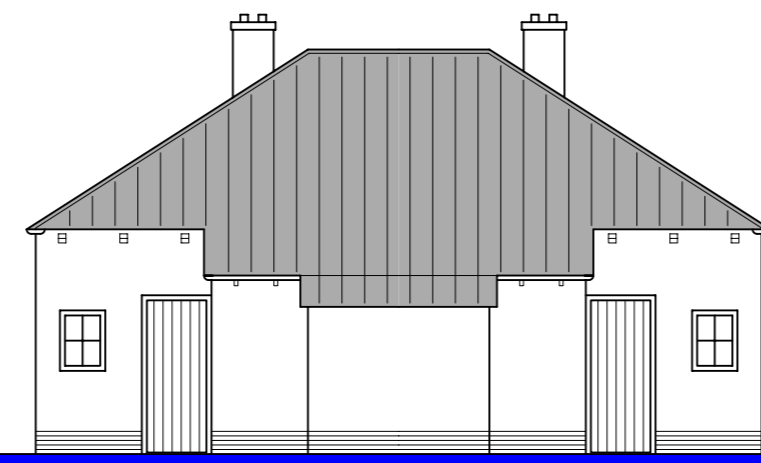
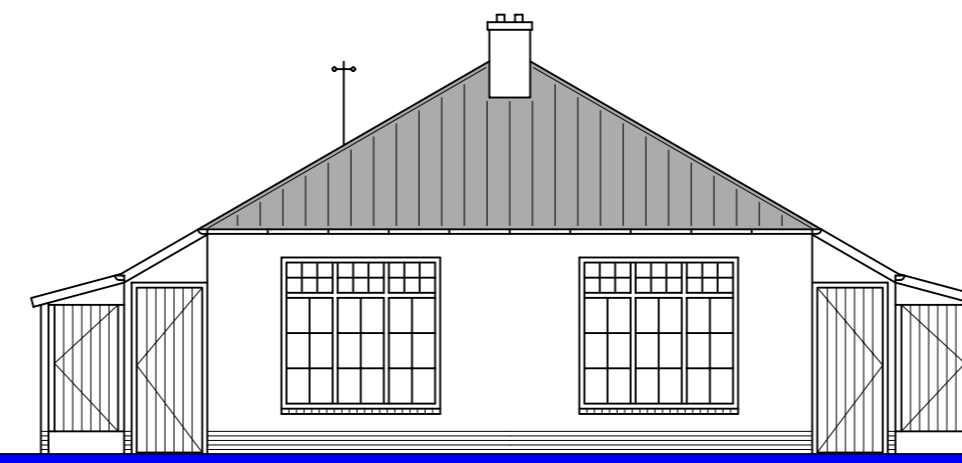




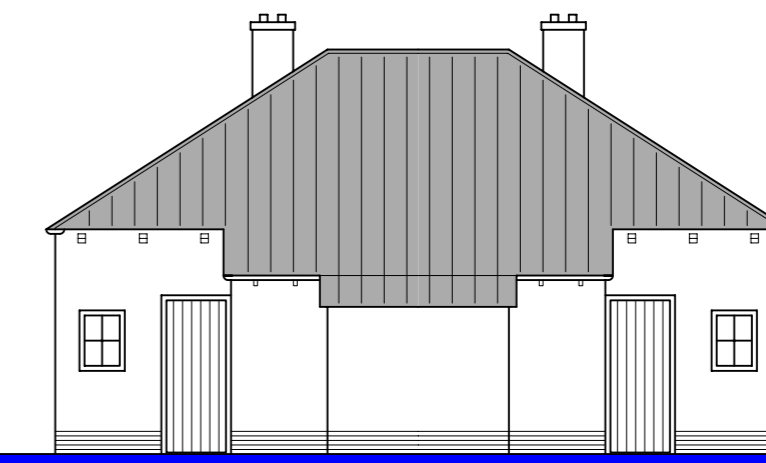
Oostgevel



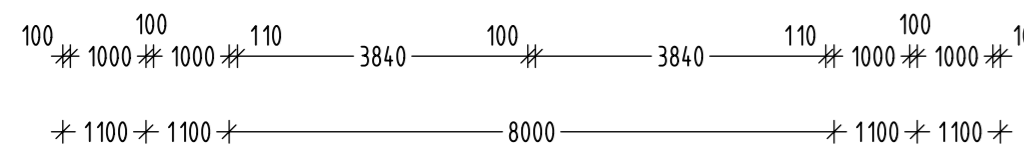
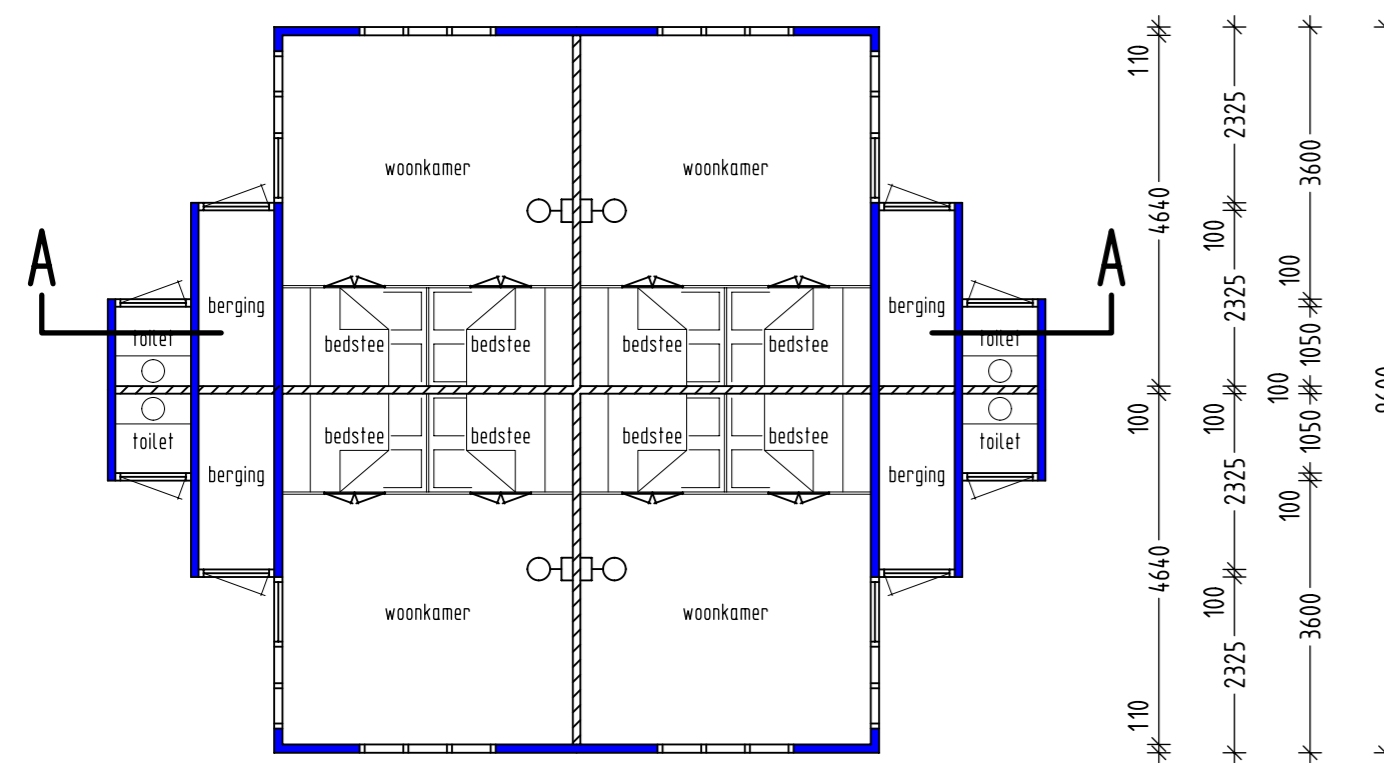
Noordgevel



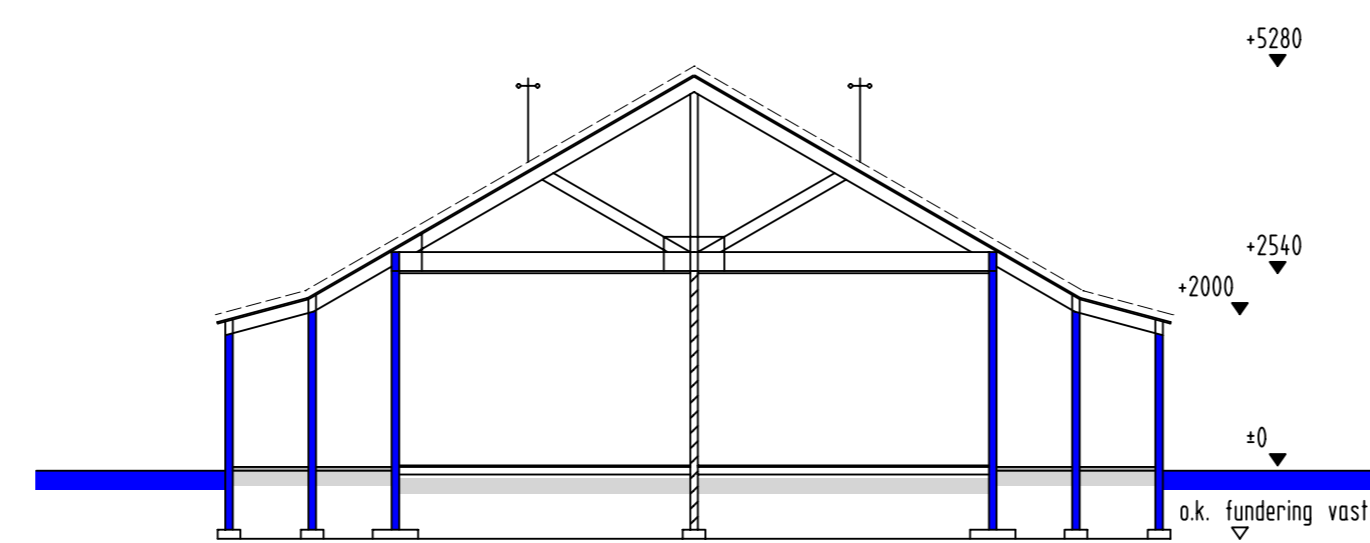
Westgevel



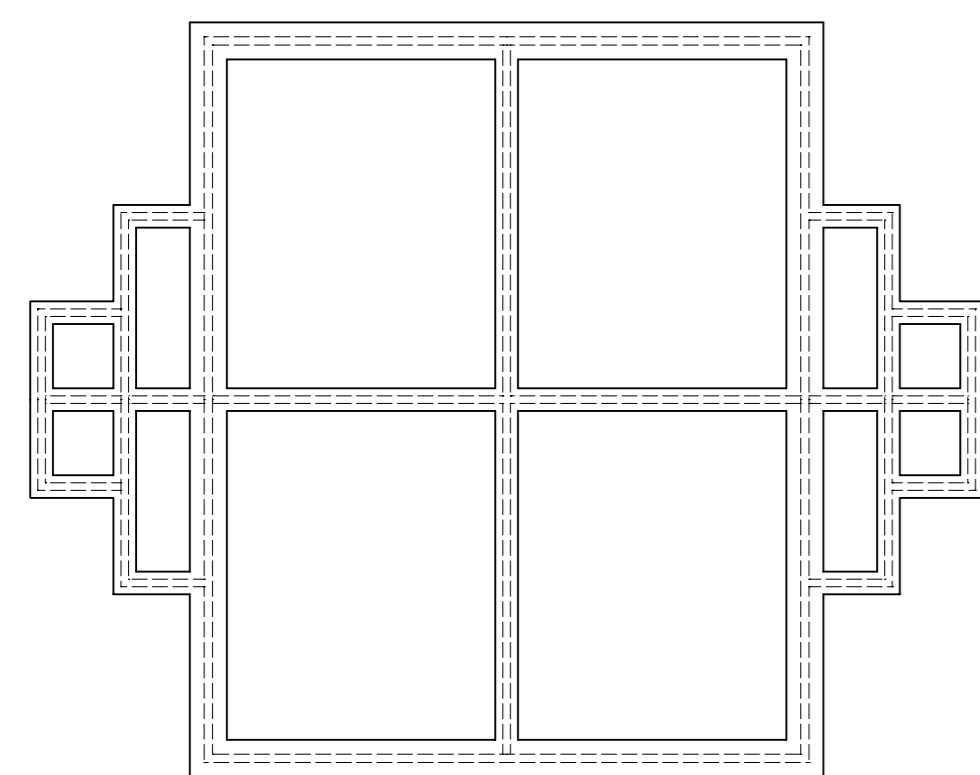
Zuidgevel



Plattergrond

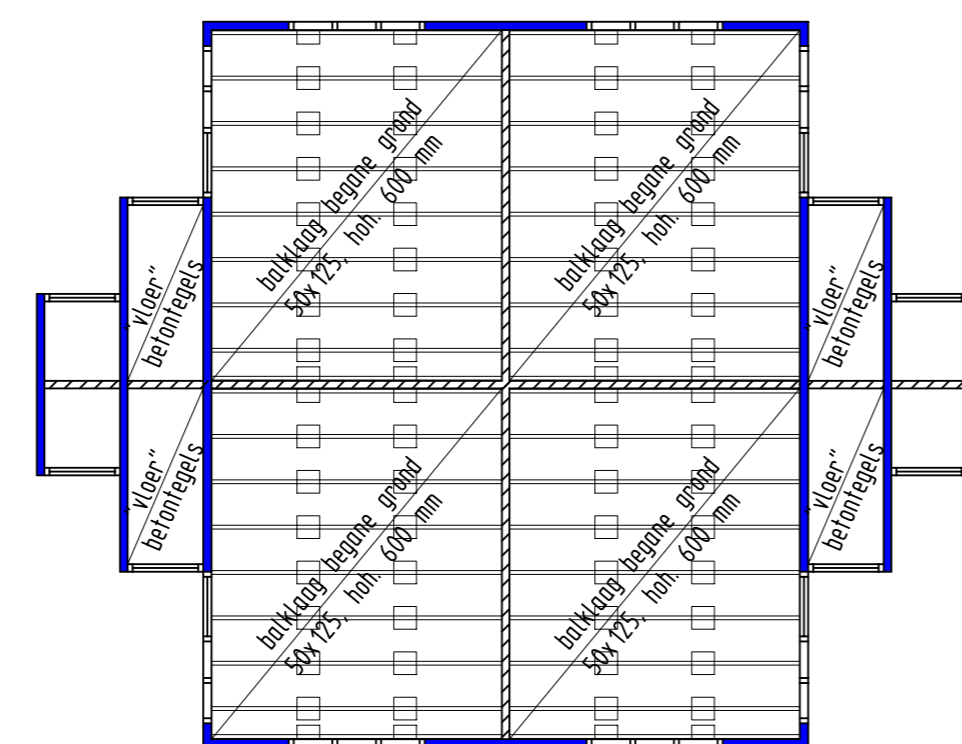


Doorsnede A-A



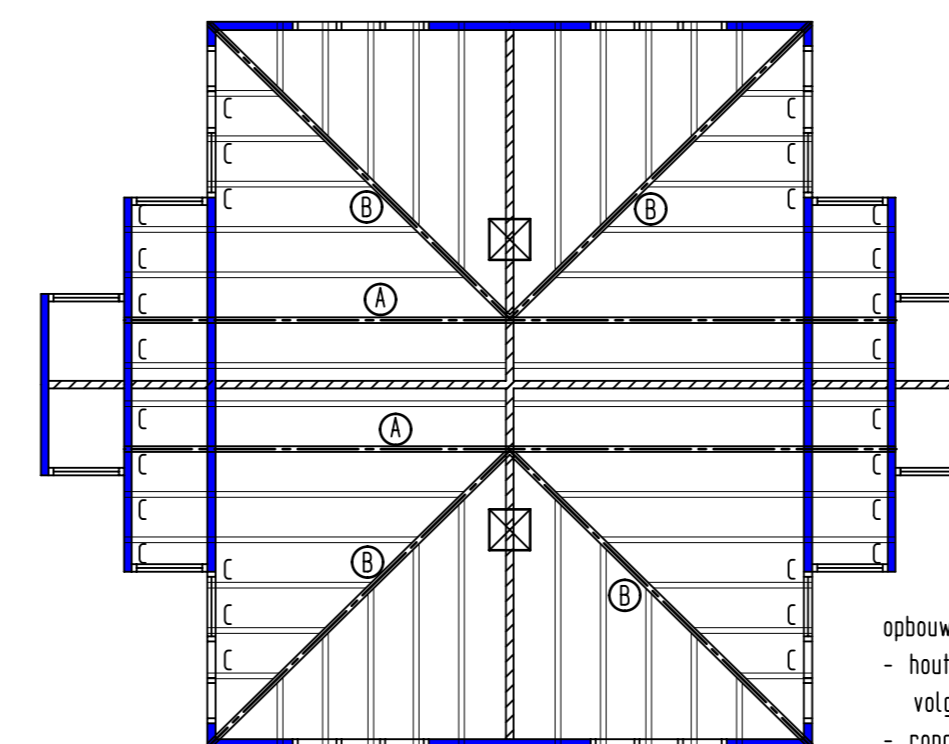
Fundering dmv. kalkzandsteenblokken aangelegd op zand, één en ander volgens berekening constructeur

Overzicht Fundering



opbouw begane grondvloer:
- balklaag 50x125, met
2 lussensteunpunten
bestaande uit betontegels.
- vloerhout dik 20 mm.

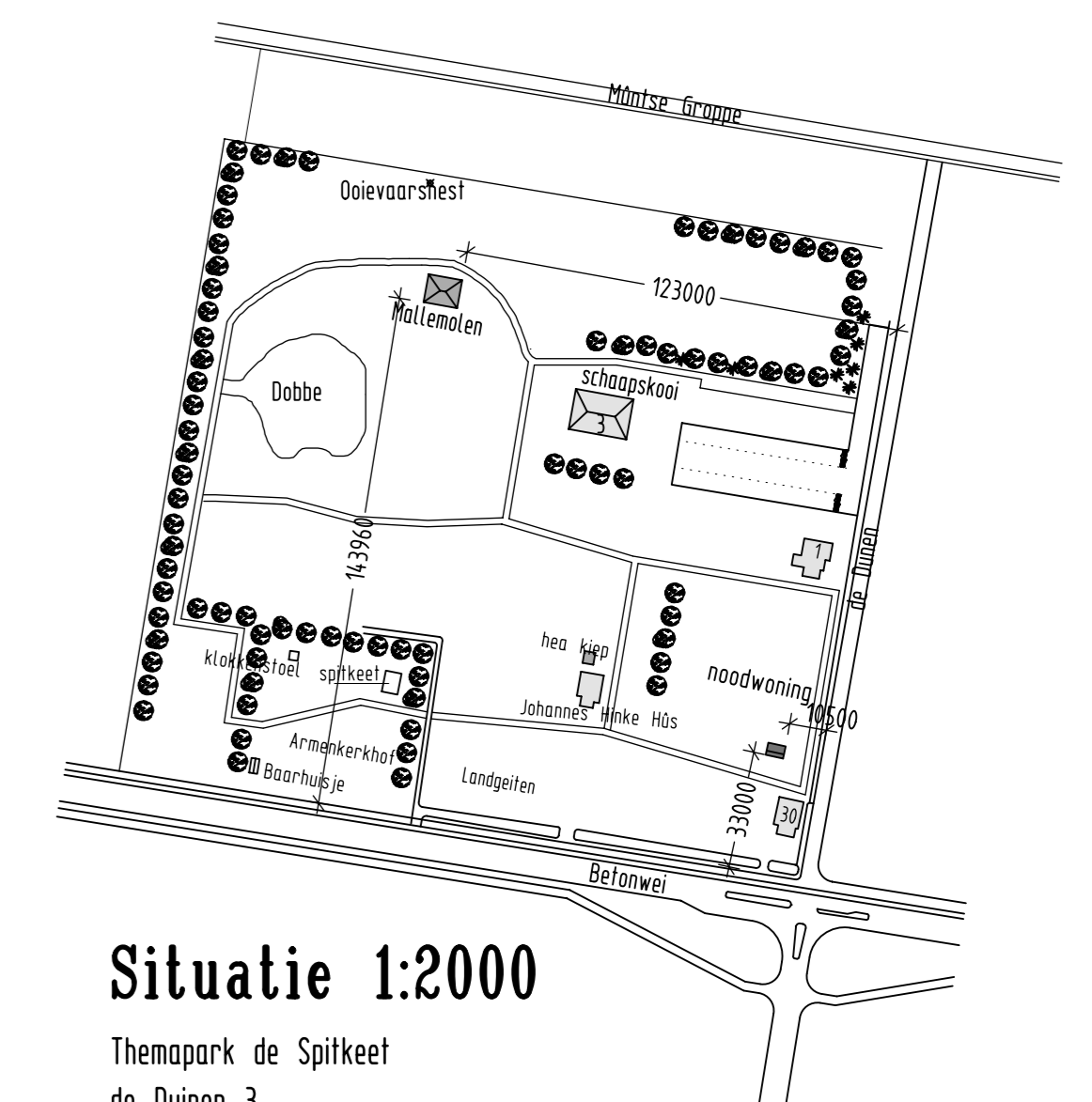
Overzicht begane grond



Ⓐ = houten spant 75x250, v.lgs. berekening constructeur
Ⓑ = hoekkeper 75x250, v.lgs. berekening constructeur
C = houten juffers rond 100 mm

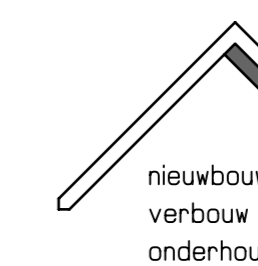
Overzicht dakconstructie

opbouw dak:
- houten spanten, hoekkeper en nokgording
volgens berekening constructeur;
- randhouten juffers;
- dakhout 20 mm dik;
- hoeten tengelatten 11x33;
- "oude" dakpannen (Friesche galjies).



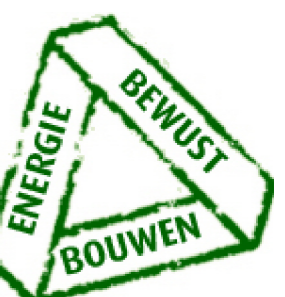
Situatie 1:2000

Themapark de Spitkeet
de Duinen 3
Harkema



Bouw Malle Molen
Themapark de Spitkeet
VOF BOUWBEDRIJF
KOOTSTRA VAN DER VEEN

kantoor/werkplaats: Nijewei 62, Harkema



Tel. 0512-362906